



M8

Series	GEL	Warranty	See Warranty Terms
Volts	6	Design	GC2
Cells	3		
Terminal Type	F12(M8)		
Included Hardware	M8 stainless bolts & washers		
Size & Thread	M8		

Charge

Charge Voltage Range	7.14V @ 25°C (77°F)
Float Voltage Range	6.85V @ 25°C (77°F)
Recommended Charge Current	40 A
Maximum Charge Current	50 A
Self-Discharge Rate	Less than 2% per month at 25°C (77°F)
Internal Resistance	5 mΩ

Capacity

Capacity Affect by Temperature	40°C (104°F)	25°C (77°F)	0°C (32°F)	-15°C (5°F)
	102%	100%	85%	65%

Hour Rate	Capacity / AMP Hour	Current / AMPs
@ 20 Hour Rate	200 AH	10 A
@ 10 Hour Rate	176 AH	17.6 A
@ 5 Hour Rate	150 AH	30 A

Cut Off Voltage	Constant Current Discharge						
	1 hr	2 hr	3 hr	4 hr	5 hr	8 hr	10 hr
1.75 VPC	97.8	60.0	45.5	36.6	30.8	21.6	17.8

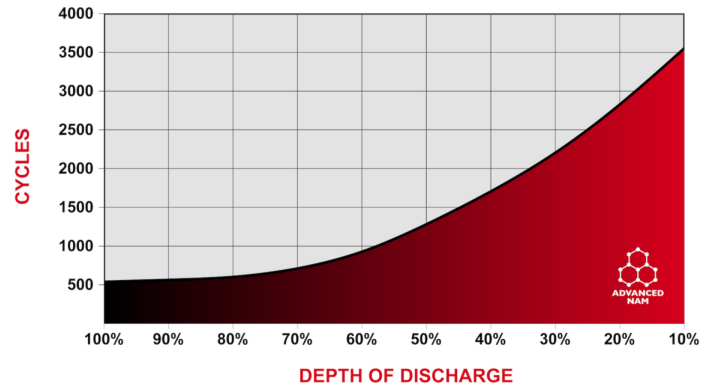
Specifications

Weight	26.5 kg	58.4 lbs
Length	280 mm	10.24"
Width	180 mm	7.09"
Height	247 mm	9.72"
Height Incl. Term.	252 mm	9.92"

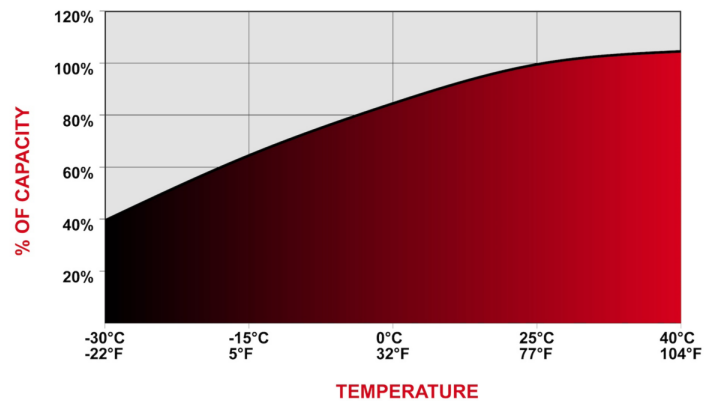
Product measurements & weights are calculated based on sample data. Individual specifications are subject to vary due to the manufacturing process & battery components.

Container	ABS
Cover	ABS
Handles	Nylon Strap

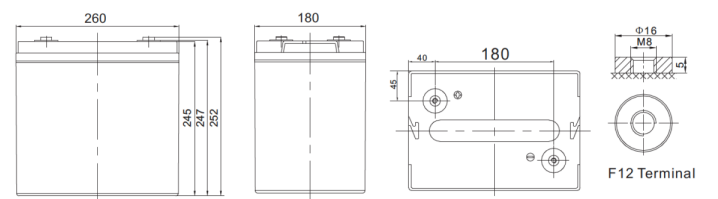
Cycle Life vs. Depth of Discharge



Capacity vs. Temperature



Detailed Illustration



bcⁱ BATTERY COUNCIL INTERNATIONAL
 Designed in compliance with applicable BCI, DIN, BS & IEC standards.
 Tested in compliance to BCI & IEC standards.



